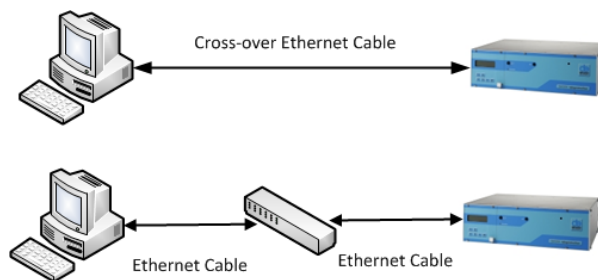


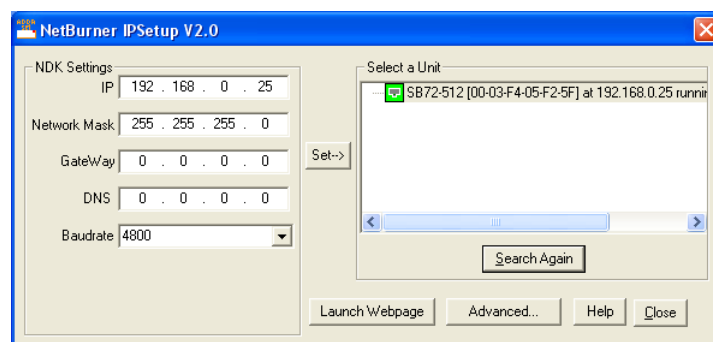
Instructions for Setting up IP Address



1. To enable the Virtual Serial port ensure that the jumper is set VSP_en
2. The default factory set IP address is 192.168.0.25
3. Connect Ethernet cable to DM1200 as shown below.



4. Power up the DM1200 and check that the three leds at the back are on.
5. To set up the address run the IPSetup program.



6. Select the Launch Webpage button or enter the device's IP address to access the webpage setup.

Device Network Settings

SB72 Device address	Static settings ▾	192.168.0.25
Device net mask	255.255.255.0	
Device gateway	0.0.0.0	
DNS server	0.0.0.0	
Device Name (for DHCP)	SB72-F25F	

Change these settings only. Other settings are factory defaults

Device Connection Settings

Listening for connections

Listen On Port: 1000

Timeout and disconnect after: 60 Seconds of inactivity

Allow new connection if the existing connection has been idle for 30 Seconds

Making outgoing connections:

Don't initiate connections ▾

Connect On Port: 0 To: (Enter Server name or IP address)

Timeout and disconnect after: 60 Seconds of inactivity

Retry failed outgoing connections after: 600 Seconds

Serial Data Port Settings

Serial Data Port: RS-232 (or TTL) on port 1 ▾ [Jumper wizard](#)

Data Baud Rate: 4800 ▾

Data Bits: 8 ▾

Data Parity: None ▾

Stop Bits: 2 ▾

Flow Control: RTS/CTS ▾

-
7. Select the Submit new Settings button to save the changes.